

# SpyGlass™ DS II

Direct Visualization System Accessories

**Boston Scientific**  
Advancing science for life™

## Advancing Pancreaticobiliary Stricture and Stone Management through an Expanding Suite of Compatible Accessory Devices

The SpyGlass™ DS II System provides important clinical, operational and economic benefits for managing patients with indeterminate biliary strictures and difficult stones.



### Stricture Management

When used during an ERCP procedure, the SpyGlass™ DS II System enables direct visualization of the bile and pancreatic ducts and can help obtain biopsy specimens, lead to the diagnosis of abnormalities, and remove foreign bodies such as migrated biliary and pancreatic plastic stents.

Performing biopsies under direct visualization using the SpyGlass™ DS II System and SpyBite™ Biopsy Forceps **(86% sensitivity)<sup>1</sup> enables faster, more accurate diagnosis of malignancies.\***

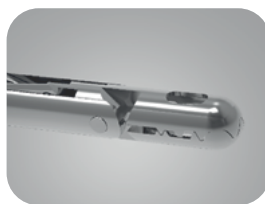


**NEW**  
SpyBite™ Max  
Biopsy  
Forceps

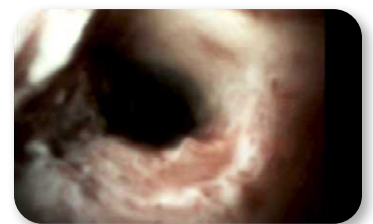


Biopsy of pancreatic stricture using SpyBite Biopsy Forceps.

**SpyBite Max Biopsy Forceps, an enhanced design to the legacy SpyBite Biopsy Forceps, shown to acquire more than 2x tissue on an average bite.<sup>2</sup>**



In a prospective study of 298 patients, SpyGlass technology **altered diagnosis or influenced patient management in 85% of patients, and had high procedural success and high accuracy** in helping to diagnose indeterminate strictures.<sup>3</sup>



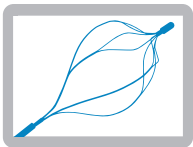
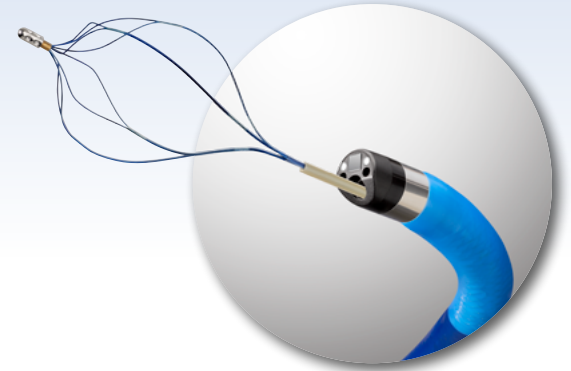
View of cholangiocarcinoma.

# SpyGlass™ DS II

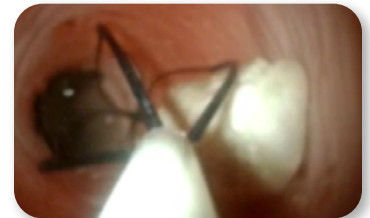
## Direct Visualization System Accessories

### Stone Management

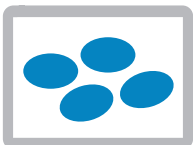
The SpyGlass™ DS II System combined with lithotripsy devices such as the Autolith™ Touch System for Electrohydraulic Lithotripsy (EHL) provides the capability to fragment biliary stones under direct visualization, which helps to enable an increased stone clearance success rate<sup>1</sup> in single session treatments.\*\*



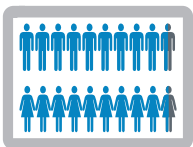
The SpyGlass Retrieval Basket can be used to capture and remove residual biliary and pancreatic stones and stone fragments visualized with the SpyGlass™ DS II System.



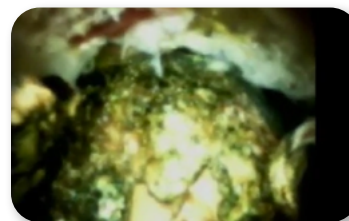
Capturing and removing stone using SpyGlass Retrieval Basket.\*



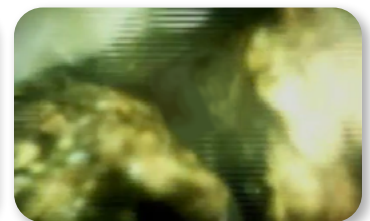
Approximately **10-15% of biliary stone cases are considered difficult** and cannot be treated effectively using standard ERCP techniques.<sup>2</sup>



Direct visualization stone clearance using EHL has been shown to be clinically effective with demonstrated **procedural success**, with **single-session stone clearance rates of greater than 95%**<sup>3</sup>.



View of large biliary stone.



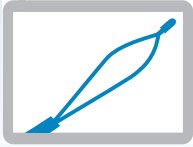
Fragmenting large biliary stone using EHL

**Achieving single session stone clearance and reducing the need for a repeat procedure(s) may deliver greater patient satisfaction and decrease unnecessary procedural costs.**

# SpyGlass™ DS II

## Direct Visualization System Accessories

**Boston  
Scientific**  
Advancing science for life™



The SpyGlass Retrieval Snare **is designed to enable efficient capture and removal of foreign bodies** in the biliary and pancreatic ducts, such as migrated plastic stents, during an ERCP procedure.



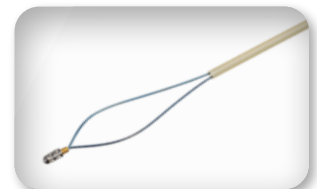
Capture and removal of a biliary plastic stent using the SpyGlass Retrieval Snare.\*

## Product Code Pricing

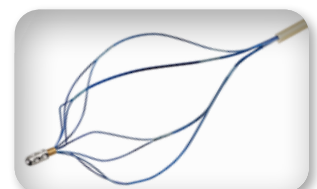
Order Number	Product Description
<b>M00546470</b> <small>NEW</small>	SpyBite™ Max Biopsy Forceps
<b>M00546550</b>	SpyGlass Retrieval Basket
<b>M00546560</b>	SpyGlass Retrieval Snare
<b>M00546620</b>	Biliary EHL Probe
<b>M005466800</b>	Autolith Touch EHL Generator
<b>M00546750</b>	Autolith Touch Extender Cable
<b>M00546760</b>	Autolith Touch Foot Pedal



SpyBite™ Max Biopsy Forceps



SpyGlass Retrieval Snare



SpyGlass Retrieval Basket

## Boston Scientific Contact Information

Name:

Phone Number:

Title:

E-mail:

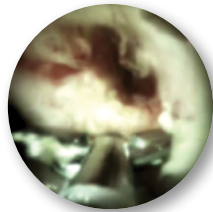
# SpyGlass™ DS II

## Direct Visualization System Accessories

**Boston Scientific**  
Advancing science for life™



View of normal ducts



Taking a biopsy using  
SpyBite™ Biopsy Forceps



Fragmenting a large stone  
using EHL

**Digital** + **Simple** = **DS**

The SpyGlass™ DS II System enables high resolution imaging and therapy during an endoscopic retrograde cholangiopancreatography (ERCP) procedure to target biopsies and fragment stones, which may result in **more efficient evaluation** and help **reduce the need for additional testing and repeat procedures** compared to traditional ERCP, and enable patients to **receive treatment sooner**. The system enables direct visualization of the bile and pancreatic ducts and can help obtain biopsy specimens, lead to the diagnosis of abnormalities, and guide stone therapy.

Since its launch in 2015, the SpyGlass™ DS System has impacted more than 120,000 patient lives in more than 65 countries.

[▶ Learn More About the SpyGlass™ DS II System](#)

*CPT copyright 2017 American Medical Association. All rights reserved. CPT is a registered trademark of the American Medical Association. Applicable FARS/DFARS Restrictions Apply to Government Use. Fee schedules, relative value units, conversion factors and/or related components are not assigned by the AMA, are not part of CPT, and the AMA is not recommending their use. The AMA does not directly or indirectly practice medicine or dispense medical services. The AMA assumes no liability for data contained or not contained herein.*

*Health economic and reimbursement information provided by Boston Scientific Corporation is gathered from third-party sources and is subject to change without notice as a result of complex and frequently changing laws, regulations, rules and policies. This information is presented for illustrative purposes only and does not constitute reimbursement or legal advice. Boston Scientific encourages providers to submit accurate and appropriate claims for services. It is always the provider's responsibility to determine medical necessity, the proper site for delivery of any services, and to submit appropriate codes, charges, and modifiers for services that are rendered. It is also always the provider's responsibility to understand and comply with Medicare national coverage determinations (NCD), Medicare local coverage determinations (LCD) and any other coverage requirements established by relevant payers which can be updated frequently. Boston Scientific recommends that you consult with your payers, reimbursement specialists and/or legal counsel regarding coding, coverage, and reimbursement matters.*

\*Compared to cytology brushing.

\*\*Compared to balloon retrieval

\*\*\*Image taken in simulation model

1. Shah et al. Performance of a fully disposable, digital, single-operator cholangiopancreatoscope. *Endoscopy* 2017; 49: 651-658
2. Data on file.
3. Chen Y, et al. Single-operator cholangioscopy in patients requiring evaluation of bile duct disease or therapy of biliary stones (with videos). *Gastrointest Endosc* 2011; 74(4):805-814.
4. Parsi et al. Endoscopic management of difficult common bile duct stones. *World J Gastroenterol* 2013; 19(2):165-173

All trademarks are the property of their respective owners.

All photographs taken by Boston Scientific.

The testing was performed by or on behalf of BSC. Data on file.

Measurements taken by Boston Scientific. Data on file. Actual values may differ.

Indications, Contraindications, Warnings and Instructions for Use can be found in the product labeling supplied with each device.

**Caution:** The law restricts these devices to sale by or on the order of a physician. Indications, contraindications, warnings and instructions for use can be found in the product labelling supplied with each device. Information for use only in countries with applicable health authority registrations.  
Material not intended for use in France.

[www.bostonscientific.eu](http://www.bostonscientific.eu)

©2020 Boston Scientific Corporation or its affiliates. All rights reserved.

ENDO-798204-AA